

Item No.	6d_supp
Date of Meeting	March 13, 2018

# NERA Right-of-Way Easements

March 13, 2018



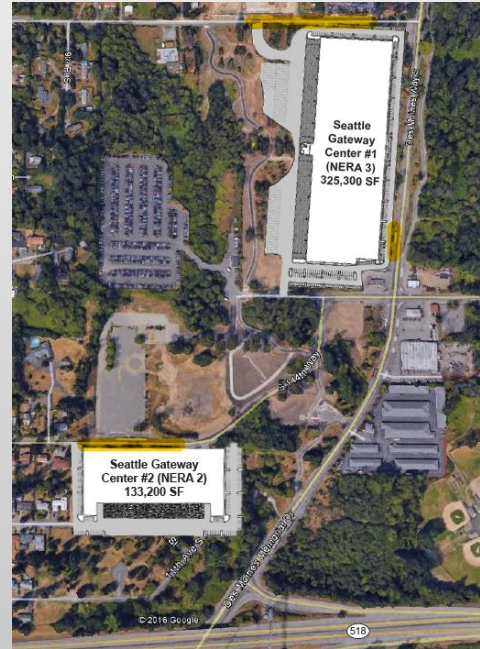
# Right Of Way Easements

- As part of the NERA 2 & 3 developments, there is a need for multiple right of way easements on current Port property.
- These 3 areas will need road widening with safety improvements for commercial vehicles.
- Total size of the easements is approximately 7,970 SF

# NERA Site Plans



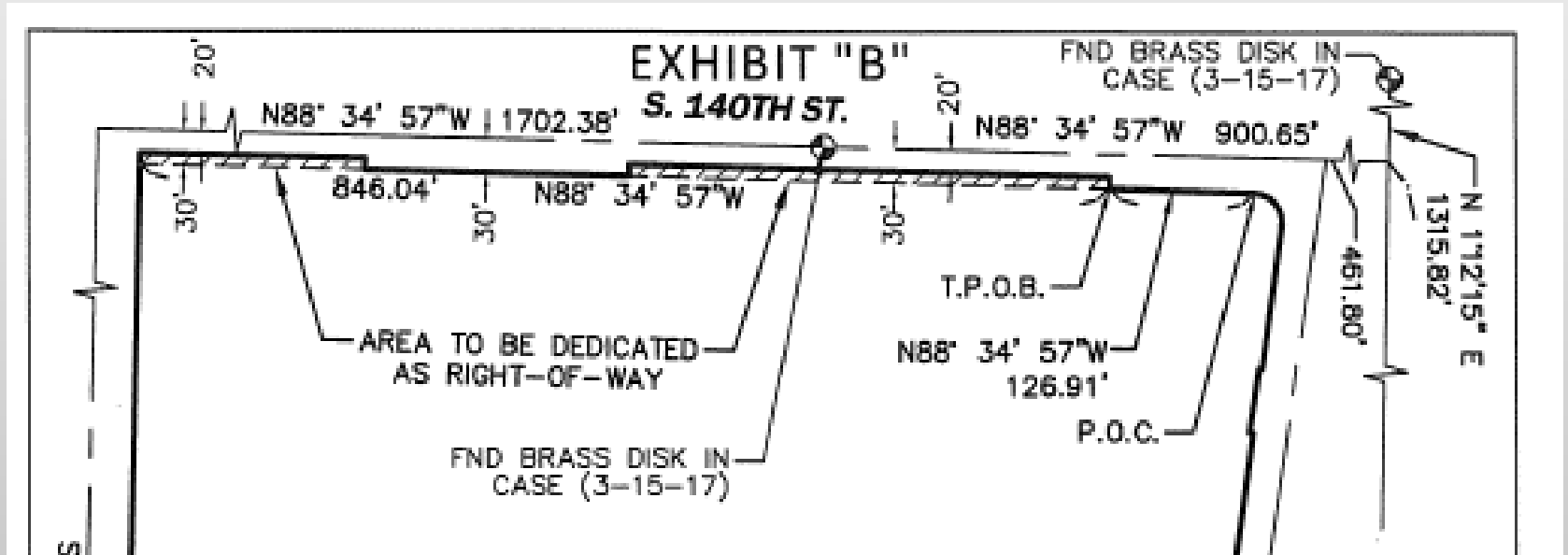
NERA 2 & 3  
Site Plan  
showing  
POS  
property  
(blue).



Site plan  
showing new  
developments  
and right of  
way easements  
(yellow).

City of Burien and Port properties being redeveloped

# 140<sup>th</sup> Right Of Way Easement



Easement will allow for wider street and better access

# Des Moines Memorial Drive ROW



Easement will allow for future widening of Des Moines Memorial Drive

